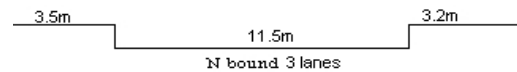
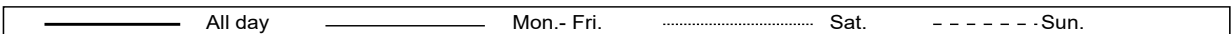
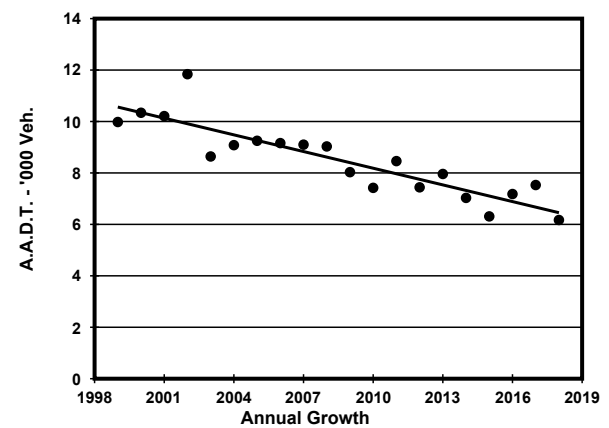
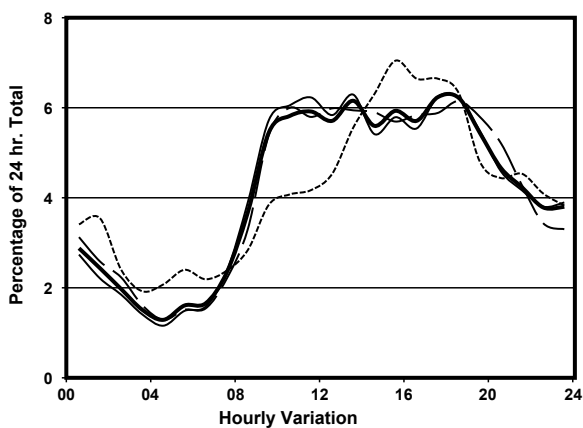
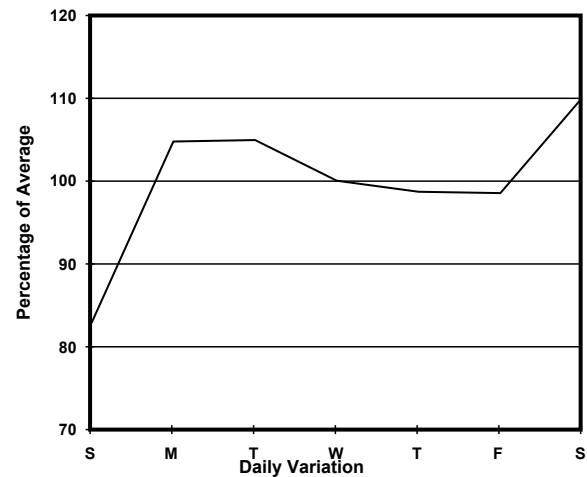
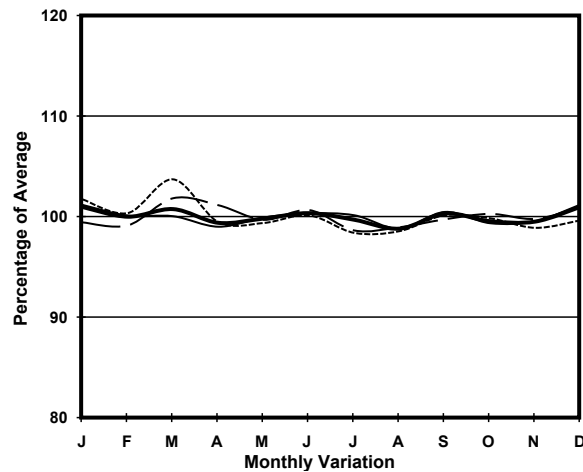


YEAR 2018
 COVERAGE (B) STATION 4210
 ROAD NETWORK MAJOR
 ROAD TYPE LOCAL DISTRIBUTOR

LINK RECLAMATION ST (from PUBLIC SQUARE ST to ARGYLE ST)



1. TRAFFIC FLOW VARIATION AND GROWTH



2. TRAFFIC CHARACTERISTICS (BY DIRECTION)

Parameter	All - Day	Mon. - Fri.	Sat.	Sun.
NORTH BOUND				
A.A.D.T.	6170	6310	6860	5170
R 12 / 24 - %	64.8	65.6	64.1	60.4
R 16 / 24 - %	82.9	83.6	82.8	78.2
AM Peak Hour	0900-1000	0900-1000	0900-1000	0900-1000
One-way flow at AM peak hour	340	360	370	200
T - % (AM)	-	2.3	-	-
PM Peak Hour	1700-1800	1700-1800	1800-1900	1600-1700
One-way flow at PM peak hour	390	390	420	340
T - % (PM)	-	5	-	-
Prop.of commercial vehicles - 16 hr.	-	4.3	-	-
 A.A.D.T.	-	-	-	-
R 12 / 24 - %	-	-	-	-
R 16 / 24 - %	-	-	-	-
AM Peak Hour	-	-	-	-
One-way flow at AM peak hour	-	-	-	-
T - % (AM)	-	-	-	-
PM Peak Hour	-	-	-	-
One-way flow at PM peak hour	-	-	-	-
T - % (PM)	-	-	-	-
Prop.of commercial vehicles - 16 hr.	-	-	-	-

3. OTHER INFORMATION AND COMMENT

4. Vehicle classification and occupancy - Monday to Friday

Time		Class of vehicle									
		Motor Cycle	Private Car	Taxi	Private LB	PLB	Goods veh.		Non Fr. Bus	Fr. Bus	
							Light	M & H		SD	DD
0700-0800	Pro	0.0	18.2	33.3	0.0	3.0	39.4	6.1	0.0	0.0	0.0
	Ocp	0.0	1.2	1.4	0.0	1.0	1.3	1.0	0.0	0.0	0.0
0800-0900	Pro	7.4	26.5	20.6	0.0	0.0	41.2	4.4	0.0	0.0	0.0
	Ocp	1.0	1.2	1.6	0.0	0.0	1.3	1.0	0.0	0.0	0.0
0900-1000	Pro	1.1	21.6	10.2	2.3	2.3	60.2	2.3	0.0	0.0	0.0
	Ocp	1.0	1.3	1.3	2.5	2.0	1.5	1.5	0.0	0.0	0.0
1000-1100	Pro	1.1	16.9	18.0	0.0	1.1	58.4	4.5	0.0	0.0	0.0
	Ocp	1.0	1.1	1.2	0.0	6.0	1.4	1.0	0.0	0.0	0.0
1100-1200	Pro	3.2	25.3	12.6	1.1	3.2	50.5	4.2	0.0	0.0	0.0
	Ocp	1.0	1.5	1.6	3.0	6.0	1.4	1.0	0.0	0.0	0.0
1200-1300	Pro	4.2	41.1	15.8	1.1	2.1	27.4	7.4	1.1	0.0	0.0
	Ocp	1.0	1.4	1.9	2.0	8.5	1.4	1.7	1.0	0.0	0.0
1300-1400 Peak hour	Pro	3.9	39.8	12.6	0.0	1.9	40.8	1.0	0.0	0.0	0.0
	Ocp	1.3	1.5	1.5	0.0	7.0	1.5	2.0	0.0	0.0	0.0
1400-1500	Pro	5.8	31.7	7.7	0.0	2.9	49.0	1.9	1.0	0.0	0.0
	Ocp	1.0	1.3	1.6	0.0	9.7	1.5	3.0	1.0	0.0	0.0
1500-1600	Pro	4.9	42.2	3.9	0.0	2.0	40.2	5.9	1.0	0.0	0.0
	Ocp	1.0	1.2	1.5	0.0	6.5	1.3	1.0	1.0	0.0	0.0
1600-1700	Pro	10.2	34.7	9.2	0.0	2.0	39.8	1.0	3.1	0.0	0.0
	Ocp	1.1	1.3	1.6	0.0	16.0	1.3	1.0	4.7	0.0	0.0
1700-1800	Pro	10.1	38.4	16.2	0.0	1.0	29.3	4.0	1.0	0.0	0.0
	Ocp	1.1	1.3	1.9	0.0	20.0	1.4	1.0	1.0	0.0	0.0
1800-1900	Pro	10.0	42.3	19.2	0.0	3.1	22.3	1.5	1.5	0.0	0.0
	Ocp	1.1	1.7	2.0	0.0	8.8	1.5	1.0	1.0	0.0	0.0
1900-2000	Pro	2.7	45.5	30.4	0.0	8.0	10.7	0.0	2.7	0.0	0.0
	Ocp	1.0	1.5	2.1	0.0	6.4	1.4	0.0	12.7	0.0	0.0
2000-2100	Pro	2.6	38.2	38.2	0.0	14.5	3.9	1.3	1.3	0.0	0.0
	Ocp	1.0	1.8	1.7	0.0	4.2	2.0	1.0	1.0	0.0	0.0
2100-2200	Pro	10.1	36.4	30.3	0.0	6.1	9.1	5.1	3.0	0.0	0.0
	Ocp	1.2	1.5	1.5	0.0	7.0	1.3	1.4	5.0	0.0	0.0
2200-2300	Pro	3.3	38.3	35.0	0.0	13.3	6.7	3.3	0.0	0.0	0.0
	Ocp	1.0	1.7	1.6	0.0	10.8	1.3	1.0	0.0	0.0	0.0
16 hours	Pro	5.4	34.7	18.3	0.3	3.9	33.0	3.2	1.1	0.0	0.0
	Ocp	1.1	1.4	1.7	2.5	7.4	1.4	1.3	4.6	0.0	0.0

Legend

Pro. Proportion of vehicles in % (Sum may not add up to 100% due to figure rounding)*

Ocp. Average occupancy of vehicles including both driver and passengers*

M&H Medium and Heavy

***** All traffic data are collected from combined bounds except for one way traffic